

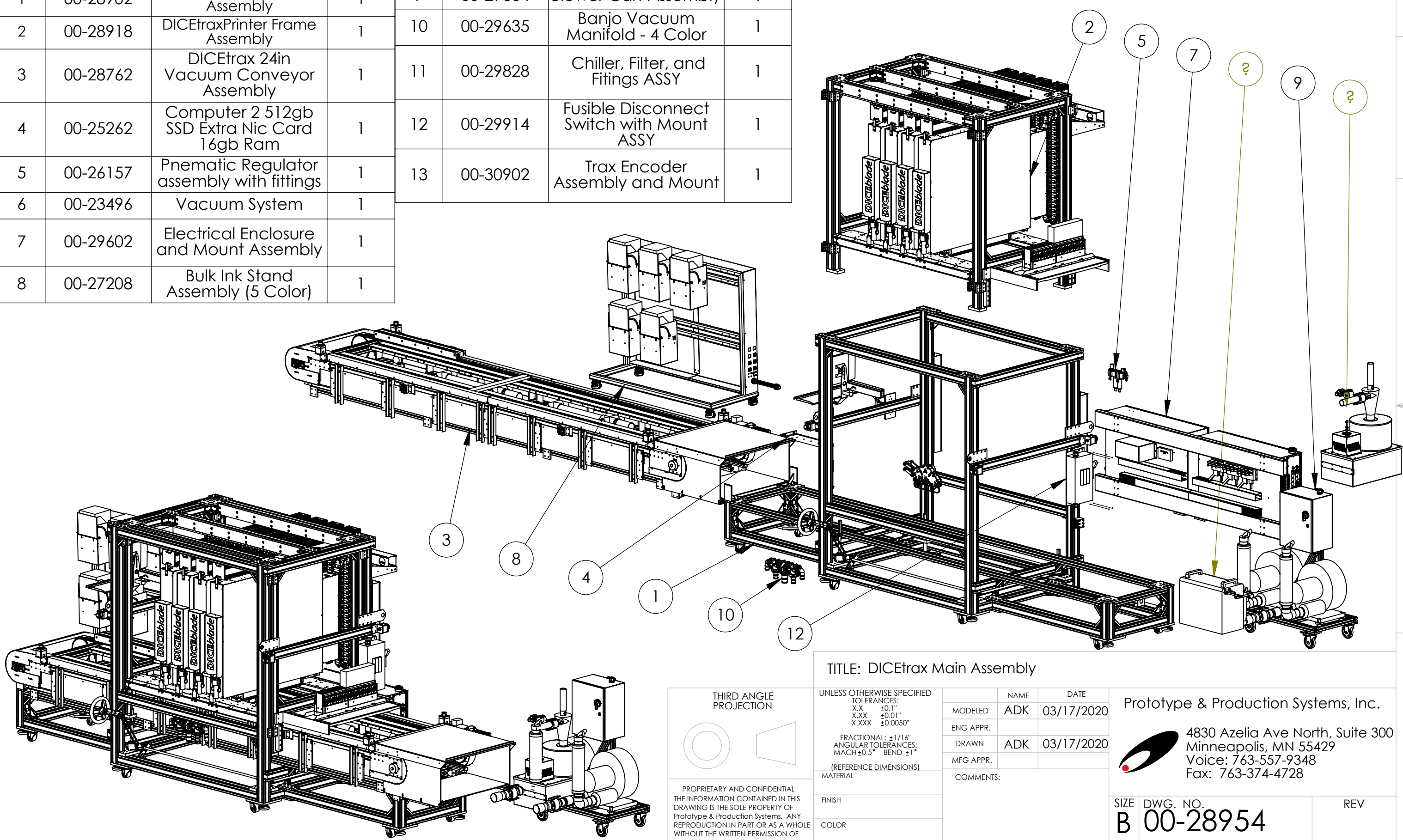
ITEM NO.	PART NUMBER	DESCRIPTION	QTY.	ITEM NO.	PART NUMBER	DESCRIPTION	QTY.
1	00-28902	DICEtrax Main Frame Assembly	1	9	00-29664	Blower Cart Assembly	1
2	00-28918	DICEtraxPrinter Frame Assembly	1	10	00-29635	Banjo Vacuum Manifold - 4 Color	1
3	00-28762	DICEtrax 24in Vacuum Conveyor Assembly	1	11	00-29828	Chiller, Filter, and Fittings ASSY	1
4	00-25262	Computer 2 512gb SSD Extra Nic Card 16gb Ram	1	12	00-29914	Fusible Disconnect Switch with Mount ASSY	1
5	00-26157	Pnematic Regulator assembly with fittings	1	13	00-30902	Trax Encoder Assembly and Mount	1
6	00-23496	Vacuum System	1				
7	00-29602	Electrical Enclosure and Mount Assembly	1				
8	00-27208	Bulk Ink Stand Assembly (5 Color)	1				

D

C

B

A



Print

D

C

B

A

TITLE: DICEtrax Main Assembly

THIRD ANGLE
PROJECTION

PROPRIETARY AND CONFIDENTIAL
THE INFORMATION CONTAINED IN THIS
DRAWING IS THE SOLE PROPERTY OF
Prototype & Production Systems. ANY
REPRODUCTION IN PART OR AS A WHOLE
WITHOUT THE WRITTEN PERMISSION OF
Prototype & Production Systems IS
PROHIBITED.

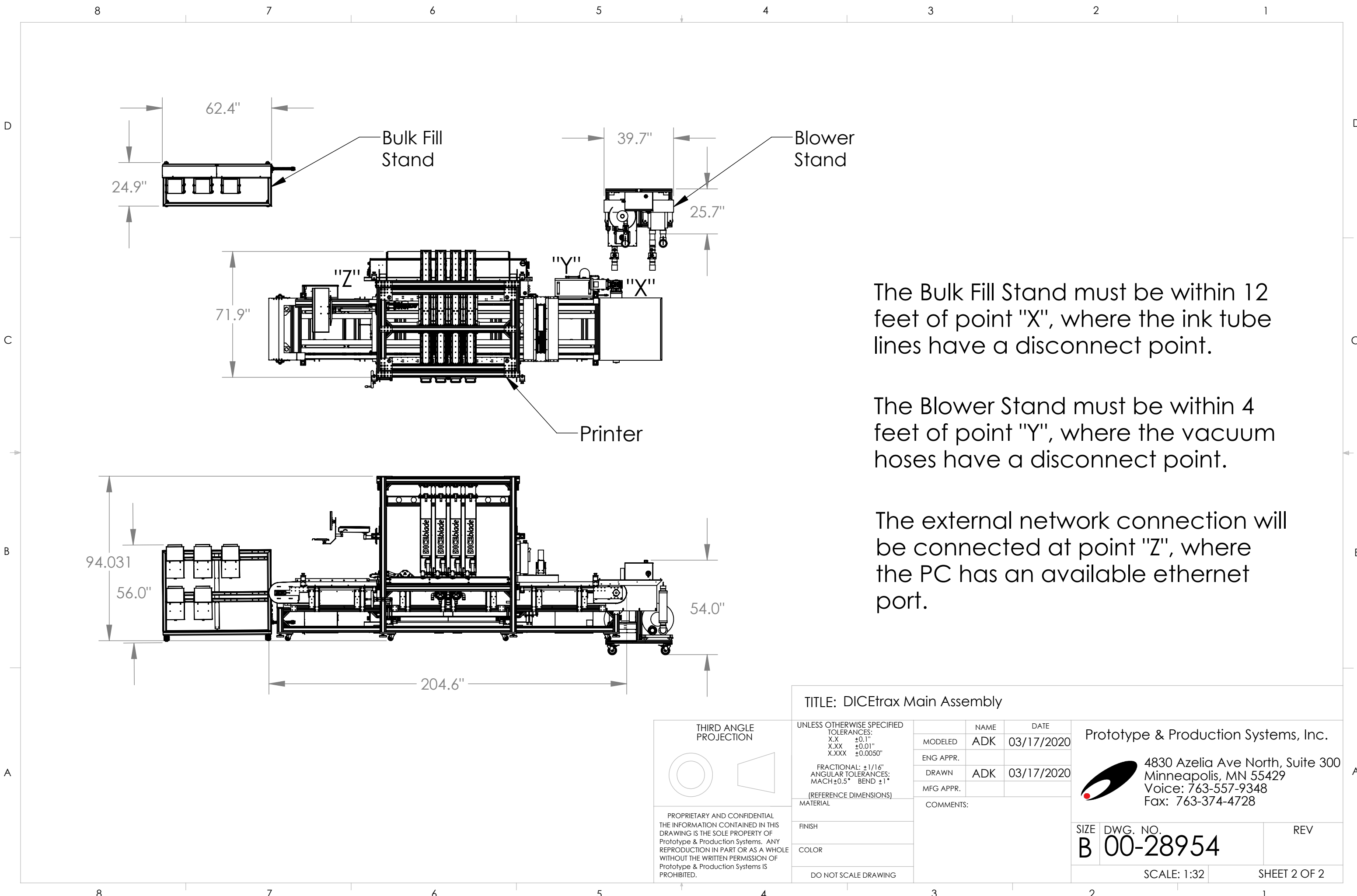
UNLESS OTHERWISE SPECIFIED	
TOLERANCES:	
X.X	±0.1"
X.XX	±0.01"
X.XXX	±0.0050"
FRACTIONAL: ±1/16"	
ANGULAR TOLERANCES:	
MACH±0.5° BEND ±1°	
(REFERENCE DIMENSIONS)	
MATERIAL	
FINISH	
COLOR	
DO NOT SCALE DRAWING	

	NAME	DATE
MODELED	ADK	03/17/2020
ENG APPR.		
DRAWN	ADK	03/17/2020
MFG APPR.		
COMMENTS:		

Prototype & Production Systems, Inc.

4830 Azelia Ave North, Suite 300
Minneapolis, MN 55429
Voice: 763-557-9348
Fax: 763-374-4728

SIZE	DWG. NO.	REV
B	00-28954	
SCALE: 1:32		SHEET 1 OF 2



The Bulk Fill Stand must be within 12 feet of point "X", where the ink tube lines have a disconnect point.

The Blower Stand must be within 4 feet of point "Y", where the vacuum hoses have a disconnect point.

The external network connection will be connected at point "Z", where the PC has an available ethernet port.

TITLE: DICEtrax Main Assembly

THIRD ANGLE PROJECTION

PROPRIETARY AND CONFIDENTIAL
THE INFORMATION CONTAINED IN THIS
DRAWING IS THE SOLE PROPERTY OF
Prototype & Production Systems. ANY
REPRODUCTION IN PART OR AS A WHOLE
WITHOUT THE WRITTEN PERMISSION OF
Prototype & Production Systems IS
PROHIBITED.

UNLESS OTHERWISE SPECIFIED	
TOLERANCES:	
X.X	±0.1"
X.XX	±0.01"
X.XXX	±0.0050"
FRACTIONAL: ±1/16"	
ANGULAR TOLERANCES:	
MACH ±0.5° BEND ±1°	
(REFERENCE DIMENSIONS)	
MATERIAL	
FINISH	
COLOR	
DO NOT SCALE DRAWING	

	NAME	DATE
MODELED	ADK	03/17/2020
ENG APPR.		
DRAWN	ADK	03/17/2020
MFG APPR.		
COMMENTS:		

Prototype & Production Systems, Inc.

4830 Azelia Ave North, Suite 300
Minneapolis, MN 55429
Voice: 763-557-9348
Fax: 763-374-4728

SIZE	DWG. NO.	REV
B	00-28954	

SCALE: 1:32 SHEET 2 OF 2