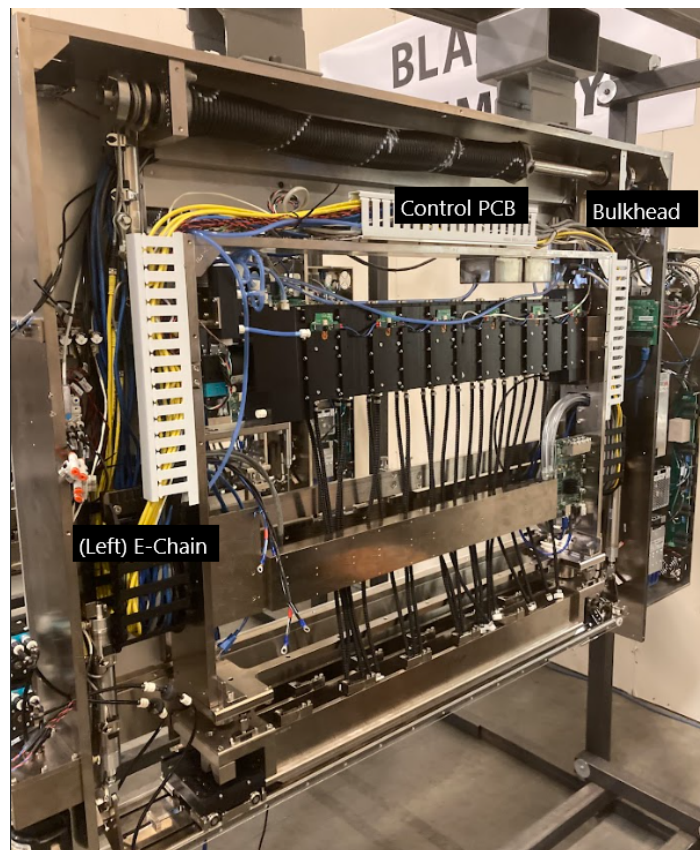


Replacing Internal Ethernet Cable for DICEblade Control Board

For failing ethernet cable characterized by intermittent connection to blades.

07.13.2022

Version 1.0



Prototype & Production Systems, Inc.
4830 Azelia Avenue North, Suite 300
Brooklyn Center, MN 55429
(763) 557-9348

Versions

Version	Notes	Personnel	Date
1.0	Initial Release		7-13-2022

Table of Contents

Versions	1
Table of Contents	2
Purpose	3
Tools Required	4
Procedure	4
Appendix: Contact Information	6

Purpose

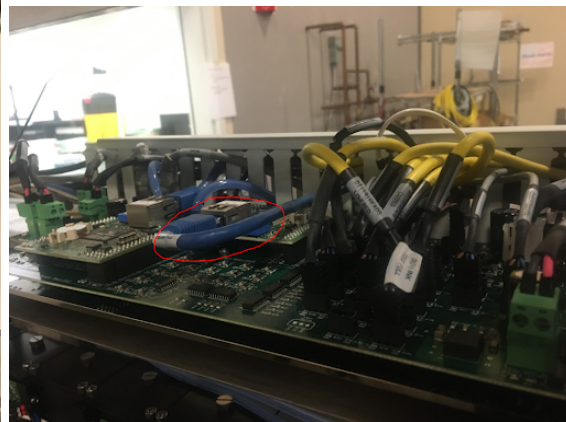
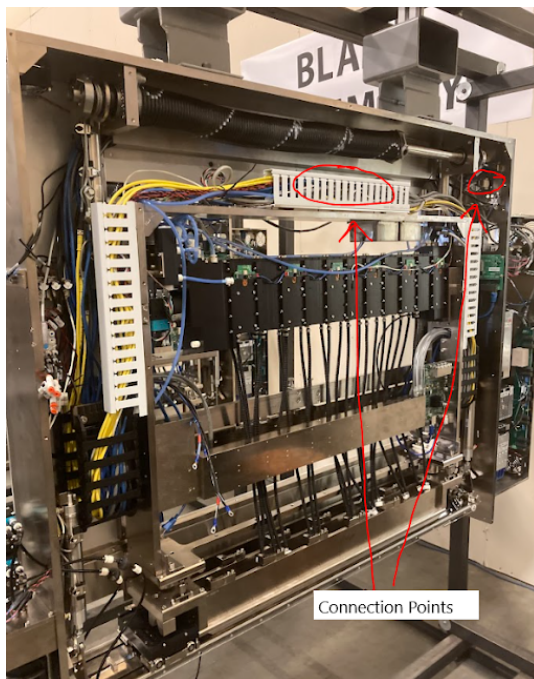
While it is uncommon, it is possible for ethernet cables to fail. In this case, the failure of the cable is characterized by intermittent connections to the blade. This document will detail the process required to remove the defective cable and replace it with a new, functioning cable.

Tools Required

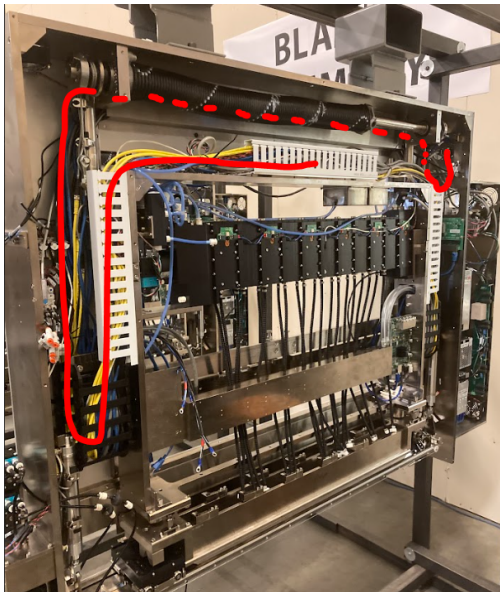
- Replacement ethernet cable (Cat6, Shielded, 10 ft)
 - PPSI Part Number: 00-17147

Procedure

- Remove blade covers to complete this process.
- Turn off drive electronics power.
- Cap the heads. Check access to the DICEblade Control PCB located at the top of the blade, above the ink supplies. If access is difficult it may be necessary to lower the heads for easier access. If this is needed, it would be a good idea to turn off circulation as well as the weir vac. Wait for the ink to pool in the res before uncovering the heads.
- Locate the cable connections at the DICEblade Control PCB and the blade bulkhead. See figures below:



- Disconnect cable shown in the picture labeled “Main Tile” and remove from e-chain and blade wireways. This cable likely goes through the e-chain that you can see on the left in the picture above and then back through the wire channel located behind the spring assembly at the top of the blade. The cable should be 10 ft long. See below for potential routing path:



- Double check new cable is Cat6a STP (shielded twisted pair). Add the label "Main Tile" to the new cable.
- Route the new cable in the same path as the previous cable.

Appendix: Contact Information

Please address any comments or questions to:

Prototype & Production Systems, Inc.
4830 Azelia Avenue North, Suite 300
Brooklyn Center, MN 55429
United States

Office: (763) 557-9348

Email: support@prototypesys.com

Online: www.prototypesys.com